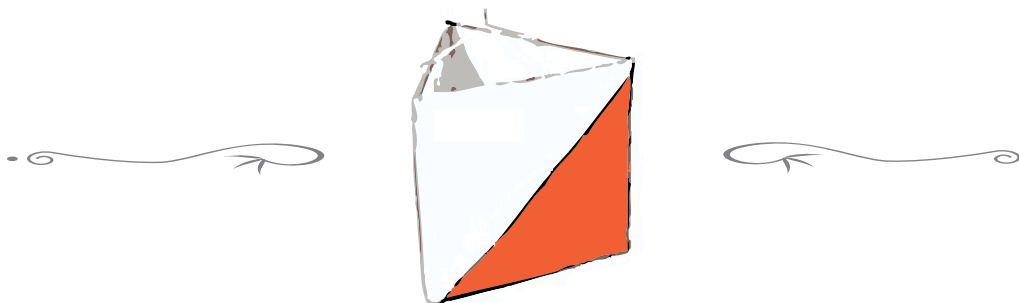




MOUNTAINEERING CLUB "POBEDA"
BELGRADE

29th MEMORIAL
"ČIKA DUŠKO JOVANOVIĆ"
- two day orienteering event -

Bulletin no. 3



Barzilovica, Čibutkovica
24-25. april 2010.



Organizer: Mountaineering club "Pobeda", Belgrade

IOF Adviser: Niculina Maiorescu (RO)

Event Director: Vladislav Matković

Nacional Controller: Dragan Nikolić
Vujadin Žagar

Map maker: Ion Gheuca (RO)

Event Secretary: Snežana Todosić, +381 64 8826 804
Jelena Jovanović Babić, +381 63 394 508

Entries / Event IT: orijentiring@pdpobeda.rs
kmitrovic@gmail.com

Informations: <http://www.pdpobeda.rs/orijentiring/en/memorijal2010/>

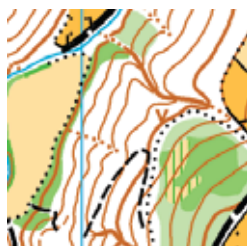
Competition Center: Refuge: "Čika Duško Jovanović" on mountain Rajac.
Working time: 23. 04. 18:00-22:00 on Rajac.
24. 04. 8:00-10:30 at the finish area,
20:00-22:00 on Rajac,
25. 04. 8:00-9:30 at the finish area.

Location and Maps: First day: World Ranking Event, Belgrade Championship for younger classes (up to M/W 20) - middle distance race, Barzilovica, map 1:10000/e:5m - new, issue: autumn 2009.

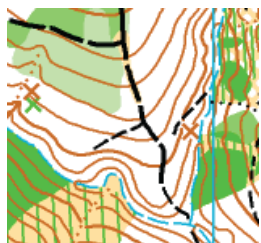
Second day: Serbian Championship in combination, Long distance race, Belgrade Cup for schools, Čibutkovica-Barzilovica, map 1:10000/e:5m – old + new part, issue: autumn 2009.

The overall results from both days will be taken for the 29th Memorial "Čika Duško Jovanović".

**Map sample,
first day:**



**Map sample,
second day:**



Start: First day: Saturday, 23. 04. 11:00h. Start is 1000m from the finish area, with 70m elevation.

Model race - warming, will be organized in the area between start and finish.

Maximum amount of time to be spent on the track is 90 minutes.

Second day: Sunday, 25. 04. 10:00h. Start is 300m from the finish area, with 30m elevation.

Maximum amount of time to be spent on track is 240 minutes for men and 180 minutes for women.

**Time sheet for
day one:** 10:00 meeting with team leaders
10:15 official opening of 29th Memorial "Čika Duško Jovanović"
11:00 first start
14:00 closing the finish
14:30 declaring the winners of the WRE race and Belgrade Championship for younger classes- middle distance race

17:30 quarantin for Mobile-O race in Ljig
18:00 first team start
19:30 closing the finish for Mobile-O race
20:00 declaring the winner of Mobile-O race

**Time sheet for
day two:** 08:00 bus leaves Rajac
10:00 first start
11:00 start of the Belgrade Cup for schools
14:00 start of the kids race
14:30 closing the finish
15:30 declaring the winner for the Belgrade Cup for schools and 29th Memorial "Čika Duško Jovanović"

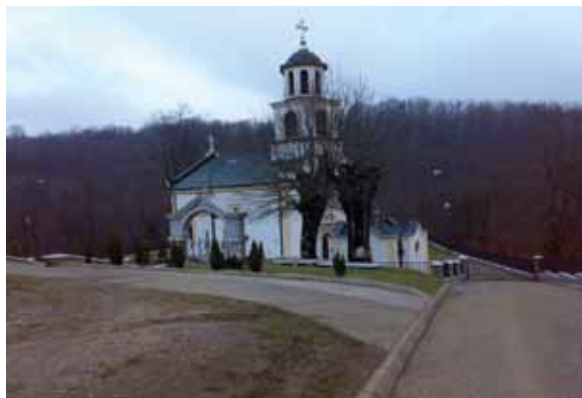
Classes: Women: 12, 14, 16, 20, **21E**, 21B, 35, 45, 55

Men: 12, 14, 16, 20, **21E**, 21A, 21B, 35, 40, 45, 50, 60

Sport for all (recreative, open)

Children D7 (up to 7 years old) and D10 (from 7 to 10 years old)

Terrain: Both days: The terrain is gently undulating with alternating hills and valleys, periodically clean and passable oak and beech woods with gentle low vegetation, suitable for running and orienteering. Complex network of roads, trails and waterways.



Entry Fee: First deadline for applications has passed.

Up to 19th April, entry fees will be:

W/M 12,14 : 1.5 eur per person per day

W/M 16 : 3 eur per person per day

W/M 7,10, free of charge

all other classes including Sport for all: 5 eur per person per day

Deadline for Entries and transport is April 19th, 2009. After that deadline if there are still vacancies entry fee will be 50% higher..

The organizer won't charge the entry fee and accomodation at the refuge "Čika Duško Jovanović" on mountain Rajac for the competitors who are ranked R in the official IOF World Ranking List.

SI Cards: Renting one SI – card costs 1,0 EUR per day.

On the afternoon of the first day, for the first time in our country, there will be organized promotive mobile-O race in the town of Ljig. The competition will consist of two-member teams which will use their mobile phones. Applications will be accepted on 23. 04. at Competition center during working hours as well as on the day of the race.

Entry fee is 2.5eur.

Transportation: Organizer will provide transport from Belgrade to the event place, Čibutkovića - refuge "Čika Duško Jovanović"- event place Čibutkovića and back to Belgrade. The bus will start from Skerlićeva street in Belgrade on the April 24th at 7:30h and will return on the April 25th after Prize awarding ceremony.

Accommodation: Competitors and others who want to take part in the competition can make reservations in the following objects:
Tourist Organisation of Ljig +381 14 85242, + 381 14 83300.
Hotel REIK "Kolubara", +381 14 80255.
Pansion "Lovačka priča", +381 14 80441
Scout's center "Skaut", +381 14 80294
Own tents, at location near refuge "Čika Duško Jovanović" free of charge.

Organizer will award cash prizes to the competitors in WRE race, for the first 3 places in W and M elite classes. First place 300 eur, second place 200 eur, third place 100 eur.

The overall results from both days will be taken for the 29th Memorial "Čika Duško Jovanović". The first three places in M and W classes will be awarded with diplomas and medals.

In case that there are complaints, they can be submitted at the Competition center up to 30 minutes after the end of the race.

At the finish line water and tea will be provided to all competitors and also it will be possible to purchase food and drinks.

Also a reminder that IOF Competition rules forbid the use of GPS devices unless there is "no display or audible feedback".

Competitors will take part in the competition at their own risk.

Organizational Committee
MC "Pobeda"

Race length for 29th Memorial "Čika Duško Jovanović" for day one:*

Classes	Course length (km)	Elevation (m)	Number of controls
M12	1.8	55	8
M14	2.0	70	9
M16	2.2	80	10
M20	4.0	210	16
M21B	3.4	210	15
M21A	4.3	255	17
M21E	5.5	290	18
M35	3.4	210	15
M40	3.0	150	11
M45	2.7	140	13
M50	2.3	125	13
M60	2.0	75	8
W12	1.7	35	8
W14	1.8	55	8
W16	2.0	75	8
W20	3.0	140	13
W21B	3.2	140	13
W21E	4.7	265	18
W35	3.0	150	11
W45	2.0	75	8
W55	1.7	80	8
Open A	1.9	45	9
Open B	1.7	35	8

* given data can be changed.

Race length for 29th Memorial "Čika Duško Jovanović" for day two:*

Classes	Course length (km)	Climb (m)	Number of controls
M12	2.0	80	11
M14	2.6	120	13
M16	3.8	195	15
M20	7.1	385	18
M21B	3.8	195	15
M21A	7.1	385	18
M21E	10.7	550	26
M35	7.1	365	18
M40	3.8	195	15
M45	2.6	120	13
M50	2.0	80	11
M60	2.0	80	11
W12	1.8	50	10
W14	2.0	80	11
W16	2.6	120	13
W20	3.8	195	15
W21B	2.6	120	13
W21E	8.8	475	24
W35	3.8	195	15
W45	3.8	195	15
W55	2.6	120	13
Open A	2.6	120	13
Open B	2.0	80	11

* given data can be changed.