



Metropolis of the South East Europe 34. Memorial „Čika Duško Jovanović“

Three days orienteering event



24–26. 4. 2015.

BULLETIN 2



ORGANIZER: Mountaineering club „Pobeda“ – Belgrade

IOF ADVISOR: Dragan Nikolić

EVENT DIRECTOR: Vladislav Matković

NATIONAL CONTROLLER: Dragan Nikolić

MAP MAKER: Georgi Hadžimitev, Valentin Kamenarov, Kamen Kamenarov, Plamen Kirilov and Dusan Krnjaić

COURSE MAKER: Georgi Hadzimitev, Bojan Komarčević, Mrgud Pajko and Dusan Krnjajić

CLUB CONTROLLER: Bojan Komarčević

EVENT SECRETARY: Snežana Todosić, +381 69 8826 804

INFORMATION: www.pdpobeda.rs/orientiring/memorial

1ST DAY

Metropolis of the South East Europe and Belgrade League – sprint distance,
Banjica, Belgrade, New map 1:4.000 / e: 2,5 m, March 2015.

2ND DAY

World ranking event & Serbian Championship – long distance,
Bela Reka, Despotovac, New map 1:15.000 / 1:10.000 / e: 5 m, March 2015.

3RD DAY

National Championship in combination (5) – middle distance,
Bela Reka, Despotovac, New map 1:10.000 / e: 5 m, March 2015.

TERRAIN

1st day: Urban terrain with many passes, stairs, hedges, technically challenging.

2nd and 3rd day: Forest suited for running with occasional open areas. The relief of mild slope with a lot of detail mainly sinkholes. The surface is not rocky but there are stones on the field. The terrain is technically challenging. and very suitable for orienteering.

HOW TO GET TO FINISH AREA

1st day: More information in Bulletin 3.

2nd and 3rd day: With car or bus by road from Despotovac, via Lipovica and Bliznak village (12km) and 6km by macadam road. Parking lot will be marked nearby finish area.



Organizer will provide transport from Belgrade to competition center and back if there is at least 20 passengers at the cost of 2000 RSD. Entries: snezanat@gmail.com

COMPETITION CENTER

1st day: More information in Bulletin 3.

2nd and 3rd day: Competition center will be on a farm Bela reka ($44^{\circ} 12' 00.52''$ N / $21^{\circ} 29' 47.66''$ E), 170 km from Belgrade via road Belgrade-Svilajnac-Despotovac-Lipovica-Bela Reka. Competition center will be open two hours before competition start.

ADDITIONAL INFORMATION

At the finish area will be tea for competitors, first aid from Despotovac hospital, cistern with water, WC, different kinds of food, souvenirs and local food products.

SIGHTSEEING AND ENTERTAINMENT

Resavska cave, Park of miniatures, Krupaj springhead and party in Despotovac
Entries: snezanat@gmail.com

SCORING

1st day: Belgrade League; Metropolis of the South East Europe - sprint

2nd day: National Championship in long distances; WRE; Metropolis of the South East Europe and 34. Memorial „Čika Duško Jovanović“

3rd day: National Championship in combination; Metropolis of the South East Europe and 34. Memorial „Čika Duško Jovanović“

AWARDS

The **first day** of competition will be scored for Metropolis of the South East Europe – SPRINT. First three places in man and woman categories will be awarded with **medals**.

Overall results of the **second and the third day** of competition will be scored for Metropolis of the South East Europe and 34. Memorial „Čika Duško Jovanović“

First three places in man and woman categories will be awarded with **diplomas and medals**.

First three places in all categories for National Championship in long distances will be awarded with **medals**. First three places in elite categories (W21E and M21E) in WRE race will be awarded with **diplomas, medals and moneyprizes**.

Money prizes amount for first three places in WRE race will be published in Bulletin 3, week before competition start.

CLASSES:

Women: 12, 14, 16, 18-20, 21E, 21A, 21B, 35, 45, 55.

Men: 12, 14, 16, 18-20, 21E, 21A, 21B, 35, 40, 50, 60

Open: SZS-Open, SZS-Recreative

Children: D7 (up to 7 years) and D10 (from 7 to 10 years)



ENTRY FEE

For booking before 20th of April 2015, 15€ for 3 days or 6€ per day.

After 20th of April, if possible to book, entry will be 20€ for 3 days or 9€ per day.

W/M 7, 10: free of charge

For all competitors in elite man category with more than 2000 points on world ranking list and in woman category with more than 1000 points on world ranking list, organizer will not charge entry fee.

PAYMENT

Cash: At the Finish area on 24th and 25th of April 2015.

ENTRIES

orienteeringonline.net

snezanat@gmail.com

<http://eventor.orienteeing.org/Events/Show/4898>

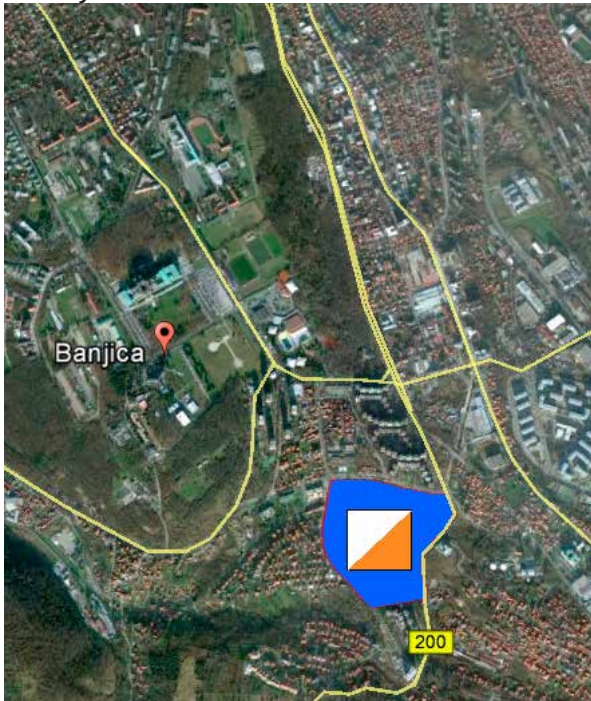
COMPETITION PROGRAM

FRIDAY, 24TH OF APRIL	SATURDAY, 25TH OF APRIL	SUNDAY, 26TH OF APRIL
15:00 Opening of competition center	09:00 Opening of competition center and Model race	10:00 The first start
17:00 The first start	(MAPS MAY BE TAKEN AT REGISTRATION IN COMPETITION CENTER)	13:00 Race closing
19:00 Race closing	10:15 Meeting with team leaders	14:30 Awarding ceremony for Metropolis of the South East Europe and 34. Memorial „Čika Duško Jovanović“ winners
	10:30 Competition opening ceremony	15:00 Competition closing
	11:00 The first start	
	15:00 Awarding ceremony for winners in WRE race and National Championship in long distances	
	15:30 Race closing	

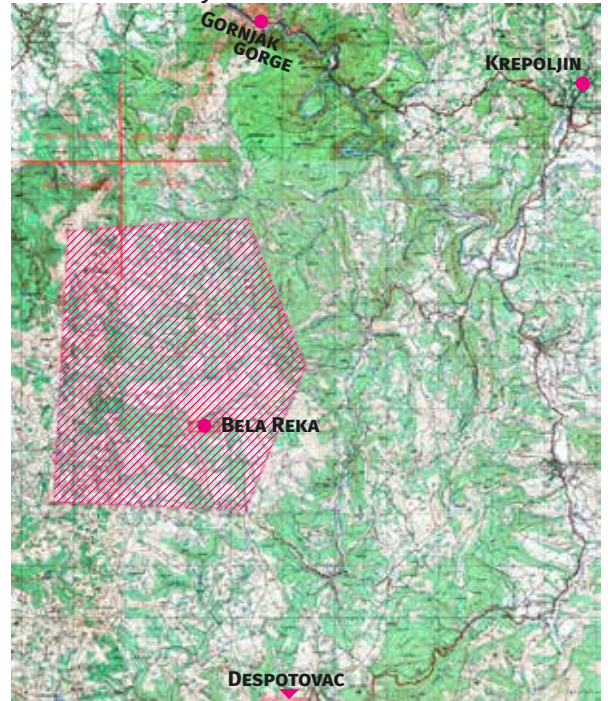


EMBARGOED AREA

1st day



2nd and 3rd day



OFFICIAL ENTRY DATE: 20TH OF APRIL.

COMPETITORS ARE TAKING PART IN THE COMPETITION AT THEIR OWN RISK!

Government of the Republic of Serbia, Ministry of the youth and sports and Secretary of the sports and youth city of Belgrade support largely realization of our projects by providing necessary resources for there financing.

Orienteering Committee of MC „Pobeda“





ACCOMODATION

HOUSEHOLD RADOSAVLJEVIC SASKA

2 two-bed rooms (double bed)
Shared bathroom and toilet
Total: 4 beds
Food: Yes
Distance from finish area: 4 km
Contact: 035 636 201, 063 8780720

HOUSEHOLD JOVANOVIC OLGICA

1 two-bed room (double bed), bathroom and toilet
Total: 2 beds
Food: Yes
Distance from finish area: 4,5 km
Contact: 035 636 134, 061 2003618

HOUSEHOLD ILIC BRANKA

3 two-bed (double bed) rooms, bathroom and toilet.
Total: 6 beds.
Food: Yes
Distance from finish area: 4,5 km
Contact: 035 636 136, 064

HOUSEHOLD TRAILOVIC DRAGAN

2 ten-bed rooms
(shared bathroom, separated toilets)
Total: 20 beds
Food: Yes
Distance from finish area: 4,5 km
Contact: 035 636 120, 069 636120, trailo076@gmail.com

KRUPAJSKO VRELO

3 three-bed and 3 two-bed rooms
(2 bathrooms with toilet)
Total: 15 beds
Food: Yes
Distance from finish area: 12 km
Contact: 012 641 041, 062 8278339, www.krupajskovrelo.com

HOUSEHOLD ZVONKO MILENKOVIC

5 four-bed rooms
(each room has bathroom and toilet)
Total: 20 beds
Food: Yes
Distance from finish area: 12 km, Panjevac village
Contact: 063 8072679, 0658072679, pvcaluplan@yahoo

HOUSEHOLD DAVIDOVIC RELJA

HOUSE FOR REST „DAVIDOVIC“

Apartment in ground floor (2 rooms): 5 beds (double bed + three-seater + 1 bed) Kitchen and bathroom
Studio on the first floor: separated entrance, 3 beds (double bed + 1 bed) Kitchen and bathroom
Total: 8 beds
Food: Yes
Distance from finish area: 18 km.
Despotovac, ona a road for Resavska cave
Overnight stay: 600 RSD. They are not preparind food but they can bring ordered food.
Contact: 064 3643096, 035 612 365, www.poslovnisvet.com/firma/kuca-za-odmor-davidovic-despotovac-5107

Prices in households:

Overnight stay: 800 RSD
Overnight stay with breakfast: 1000 RSD
Overnight stay with two meals: 1300 RSD

ACCOMODATION IN HOTEL IN DESPOTOVAC

Total: 80 beds
Distance from finish area: 18 km
Overnight stay: 900 RSD
Breakfast (buffet breakfast, over 20 users): 250 RSD
Lunch (soup, main course, salad, bread): 350 RSD
Dinner (steak, fries, salad, cake): 450 RSD
City tax: 60 RSD
Insurance: 16 RSD
Contact: TLS Company, 035 612 299, 069 281 5902, 069 381 5902, www.tlscompany.net, dragan@tlscompany.net

IN YOUR OWN TENTS

Nearby finish area, free with advance notice to organizer

Competitors reserve accomodation **directly** by listed telephone numbers and mail addresses.

When you reserve, **be sure to mention** that you are participating in orienteering competition

For accomodation in Belgrade, you can get information on mail: snezanat@gmail.com