



Metropolises of the South East Europe
34. Memorial „Čika Duško Jovanović“
Three days orienteering event



24 - 26. 4. 2015.
BULLETIN 3



Organizer: Mountaineering club „Pobeda“ – Belgrade

IOF advisor: Dragan Nikolić

Event director: Vladislav Matković

National controller: Dragan Nikolić

Controller for the first day: Milan Cvetković.

Map maker: Georgi Hadžimitev, Valentin Kamenarov, Kamen Kamenarov, Plamen Kirilov and Dusan Krnjajić

Course maker: Georgi Hadžimitev, Bojan Komarčević, Mrgud Pajko and Dusan Krnjajić

Club controller: Bojan Komarčević

Event secretary: Snežana Todosić, +381 69 8826 804

Information: www.pdpobeda.rs/orijentiring/memorial

1st day

Metropolis of the South East Europe and Belgrade League – sprint distance,
Banjica, Belgrade, New map 1:4.000 / e: 2,5 m, March 2015.

2nd day

World ranking event & Serbian Championship – long distance,
Bela Reka, Despotovac, New map 1:15.000 / 1:10.000 / e: 5 m, March 2015.

3rd day

National Championship in combination (5) – middle distance,
Bela Reka, Despotovac, New map 1:10.000 / e: 5 m, March 2015.



Competition program

Friday, 24th of April

15:00
Opening of competition center
17:00
The first start
19:00
Race closing

Saturday, 25th of April

09:00
Opening of competition center
and Model race
10:15
Meeting with team leaders
10:30
Competition opening ceremony
11:00
The first start
15:00
Awarding ceremony for
winners in WRE race and
National Championship in
long distances
15:30
Race closing

Sunday, 26th of April

10:00
The first start
13:00
Race closing
14:30
Awarding ceremony for
Metropolis of the South East
Europe and 34. Memorial
„Čika Duško Jovanović“ winners
15:00
Competition closing

Additional information

For all three days of competition there will be additional descriptions of check points for all categories.

According to the rules of the World Orienteering Federation, on the competition is forbidden to use GPS accessories.

Bus transportation for the second and third day of competition starts 25.04.2015. at 06:30h from Skerlić street in Belgrade, below the Temple of Saint Sava. Ticket is 2.000 dinars.

For the elite category for the second day of competition for the WRE race are mandatory to apply via IOF website in IOF Eventor application.

Below is a table with track length and number of control points for the first day of competition in the field Banjica and also part of the map field. It is a new map, 1:4000, e:2,5m. Competition center for the first day of competition is in front of school “Bora Stanković”. Distance from competition center to finish line for the first day of competition will be 200 m. Distance from start to finish line for the first day of competition will be 150 m. For the first day of competition, as a refreshment on the finish line, there will be drinking water.



Below is a table with the track length, number of control points and height and also parts of the map Bela Reka where model race will also be held. It is a new map, 1:15000/ 1:10000, e:2,5 m. Distance from competition center to finish line for the second and third day of competition will be 310 m. Distance from start to finish line for the second day of competition will be 270 m and distance from start to finish line for the third day of competition will be 230 m. On the second day of competition, at the long distances, there will be drinking water as a refreshment, on two places on the field, which will be marked on a map. One point with drinking water will be at the control point. Tea will be as a refreshment at the finish of the second and third day of competition.

Cash and other valuable prizes are provided for the winners.

Additional accommodations in the vicinity of Despotovac:

Restaurant "Panorama", the village Lomnica.

Four double and one triple (each room has its own bathroom and toilet)

A total of 11 beds, the possibility of food (yes)

Distance from the competition centre 6 km.

Contact: Zvonko Milosavljević 035 630 330 - 063 8520 558

Accommodation "Žubor vrela" Waterfall "Veliki Buk" Lisa.

Five double bedrooms, three with a double bed and two twin beds (each room has its own bathroom)

A total of 10 beds, the possibility of food (yes)

Distance 20 km from the competition centre.

Contact: 064 457 5337 - 063 866 7967 Slaviša and Bojan

<http://www.upoznajsrbiju.co.rs/restoran/-zubor-vrela--2391>

Prices for both accommodation:

Bed 800din, bed and breakfast 1000 din, bed and two meals 1300din

Household Marković Radoljub

Hall on the first floor without beds (one toilet and shower)

Space for about 30 people with the space and table for table tennis and music device.

The possibility of food (no), village shop is at 50 m.

Prices: Free! (Sponsorship host).



34. memorijal SPRINT		
M21E	2.6	27
W21E	2.2	25
M21A	1.8	18
W21A	1.7	15
M21B	1.8	16
W21B	1.6	16
M18-20	2.2	21
W18-20	2	18
M16	2.1	20
W16	1.8	19
M14	1.6	22
W14	1.5	17
M12	1.4	18
W12	1.2	15
M35	2.1	22
W35	2	19
M40	1.9	18
W45	1.8	21
M50	1.6	19
W55	1.5	17
M60	1.4	15
SZS-C	1.6	22
SZS-B	2.1	20

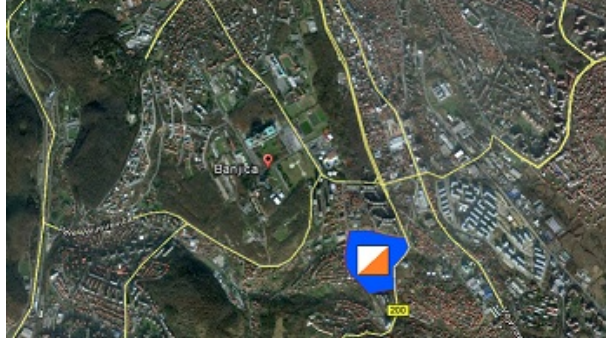
34. memorijal LONG			
M12	1,8	35	8
W12	1,5	25	7
M14	2,2	65	8
W14	2,1	55	8
M16	4,0	110	11
W16	3,5	115	8
M18-20	4,6	160	11
W18-20	4,6	160	11
M21E	12,9	470	28
W21E	8,0	340	20
M21A	6,8	290	17
W21A	3,5	115	8
M21B	4,0	110	11
W21B	3,5	115	8
M35	8,0	340	20
W35	4,6	160	11
M40	4,6	160	11
M45	4,6	160	11
W45	3,5	115	8
M50	4,0	110	11
W55	2,1	55	8
M60	3,5	115	8
SZS-C	1,8	35	8
SZS-B	2,2	65	8

34. memorijal MIDDLE			
M12	1,6	70	8
W12	1,1	25	7
M14	1,7	70	9
W14	1,6	70	9
M16	2,2	110	10
W16	1,9	100	9
M18-20	2,0	100	11
W18-20	2,0	100	11
M21E	4,9	200	20
W21E	3,5	145	16
M21A	2,5	115	11
W21A	1,9	100	9
M21B	2,2	110	10
W21B	1,9	100	9
M35	3,5	145	16
W35	2,0	100	11
M40	2,0	100	11
M45	2,0	100	11
W45	1,9	100	9
M50	2,2	110	10
W55	1,6	70	9
M60	1,9	100	9
SZS-C	1,6	70	8
SZS-B	1,7	70	9



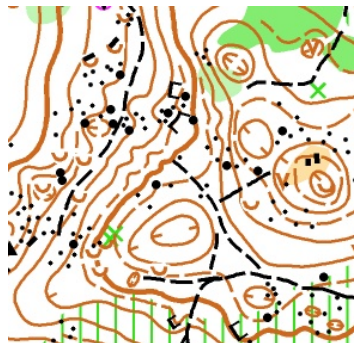
Terrain

1st day: Urban terrain with many passes, stairs, hedges, technically challenging.



2nd and 3rd day: Forest suited for running with occasional open areas. The relief of mild slope with a lot of detail mainly sinkholes. The surface is not rocky but there are stones on the field.

The terrain is technically challenging. and very suitable for orienteering.



Orienteering Committee of MC „Pobeda“

